

# Canopy of Stars

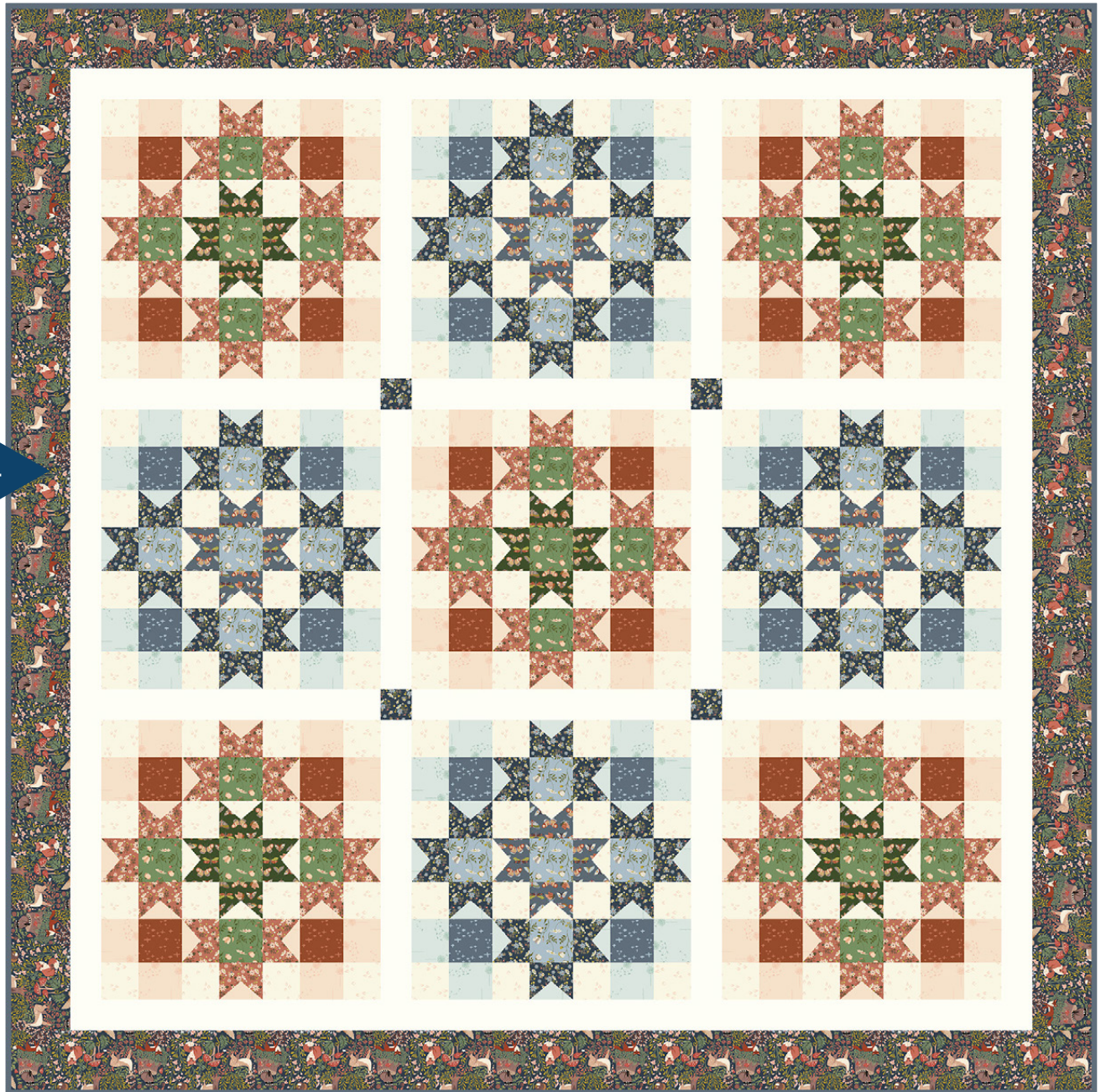
designed by Natalie Crabtree

featuring *Under the Canopy* by Jennifer Moore of Monaluna

SIZE: 88" x 88"

INTERMEDIATE  
SKILL

FREE  
PROJECT



THIS IS A DIGITAL REPRESENTATION OF THE QUILT TOP, FABRIC MAY VARY.









**PLEASE NOTE:** BEFORE MAKING YOUR PROJECT, CHECK FOR ANY PATTERN UPDATES AT [WINDHAMFABRICS.COM](http://WINDHAMFABRICS.COM)'S FREE PROJECTS SECTION.



# Canopy of Stars

**PROJECT DISCLAIMER:** Every effort has been made to ensure that all projects are error free. All the information is presented in good faith, however, no warranty can be given nor results guaranteed. Therefore, we assume no responsibility nor damages that may occur when referring to this pattern. When errors are brought to our attention, we make every effort to correct and post a revision as soon as possible. We suggest you check [windhamfabrics.com](http://windhamfabrics.com) for pattern updates and to test the pattern prior to making the project. Test templates first, before cutting all the pieces. Free projects are not for resale.

WOF=WIDTH OF FABRIC

KEY	FABRIC	SKU	YD	CUTTING INSTRUCTIONS
A		Moonlit Essentials 54288-26 Ivory	1-3/4	(12) 3-1/2" x WOF strips. Subcut (144) 3-1/2" squares. (5) 2-1/2" x WOF strips. Subcut (72) 2-1/2" squares.
B		Moonlit Essentials 54290-10 Shell	1-1/4	<b>BLOCK ONE:</b> (4) 4-1/2" x WOF strips. Subcut (40) 4-1/2" x 3-1/2" rectangles. (8) 2-1/2" x WOF strips. Subcut (120) 2-1/2" squares.
C		Moonlit Essentials 54290-25 Spin- drift	1	<b>BLOCK TWO:</b> (3) 4-1/2" x WOF strips. Subcut (32) 4-1/2" x 3-1/2" rectangles. (6) 2-1/2" x WOF strips. Subcut (96) 2-1/2" squares.
D		54296-8 Sage	1/2	<b>BLOCK ONE:</b> (3) 4-1/2" x WOF strips. Subcut (25) 4-1/2" squares.
E		54291-1 Night	1-3/8	(9) 4-1/2" x WOF strips. Sew strips via short ends and subcut (2) 4-1/2" x 80-1/2" and (2) 4-1/2" x 88-1/2" strips.
F		54296-9 Sky	1/2	<b>BLOCK TWO:</b> (3) 4-1/2" x WOF strips. Subcut (20) 4-1/2" squares.
G		54294-6 Terra	1	<b>BLOCK ONE:</b> (8) 3-1/2" x WOF strips. Subcut (120) 3-1/2" x 2-1/2" rectangles.
H		54294-1 Night	7/8	<b>BLOCK TWO:</b> (1) 2-1/2" x WOF strips. Subcut (4) 2-1/2" squares. (6) 3-1/2" x WOF strips. Subcut (96) 3-1/2" x 2-1/2" rectangles.





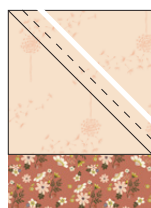
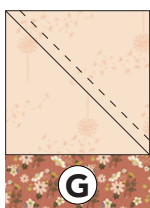
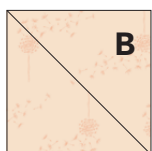
# Canopy of Stars

KEY	FABRIC	SKU	YD	CUTTING INSTRUCTIONS
I		54293-5 Slate	3/8	<b>BLOCK TWO:</b> (2) 3-1/2" x WOF strips. Subcut (32) 3-1/2" x 2-1/2" rectangles.
J		54293-4 Forest	1/2	<b>BLOCK ONE:</b> (3) 3-1/2" x WOF strips. Subcut (40) 3-1/2" x 2-1/2" rectangles.
K		Ruby + Bee Solids 51583-55 Wisp	1-2/3	(12) 2-1/2" x WOF strips. Subcut (12) 2-1/2" x 24-1/2" sashing strips. (8) 2-1/2" x WOF strips. Sew strips via short ends and subcut (2) 2-1/2" x 76-1/2" and (2) 2-1/2" x 80-1/2" strips.
L		Moonlit Essentials 54289-23 Twilit	3/8	<b>BLOCK TWO:</b> (2) 4-1/2" x WOF strips. Subcut (16) 4-1/2" squares.
M		Moonlit Essentials 54289-4 Brick	1/2	<b>BLOCK ONE:</b> (3) 4-1/2" x WOF strips. Subcut (20) 4-1/2" squares.
		Backing	8	Batting: 96" x 96"

## BLOCK ASSEMBLY

1. Draw a diagonal line on the wrong side of each **A**, **B** and **C** 2-1/2" square.
2. **B/G Unit:** Place (1) **B** 2-1/2" square with a drawn diagonal line onto the top corner of (1) **G** 2-1/2" x 3-1/2" rectangle, right sides together and edges aligned.
3. Sew along the drawn diagonal line. Trim the outermost excess fabric at the top right corner to 1/4" and press open to the corner. Unit should measure 2-1/2" x 3-1/2" unfinished. Make (60) **B/G** Unit 1s.
4. Similar to **B/G** Unit 1 assembly make the mirror version of **B/G** Unit 2 as shown in diagram. Unit should measure 2-1/2" x 3-1/2" unfinished. Make (60) **B/G** Unit 2s.
5. **B/G Petal Unit:** Sew together (1) **B/G** Unit 1 and (1) **B/G** Unit 2 as shown. **B/G** Petal Unit should measure 4-1/2" x 3-1/2" unfinished. Make (60) **B/G** Petal Units.

STEP 1 AND 2



**B/G** Unit 1



Make 60

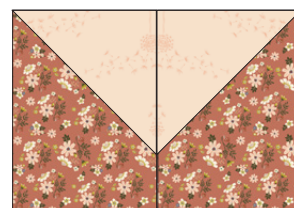
**B/G** Unit 2



Make 60

MIRROR VERSION

**B/G** Petal Unit

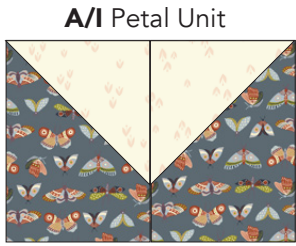


Make 60

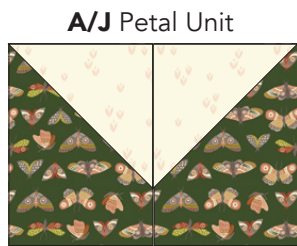


# Canopy of Stars

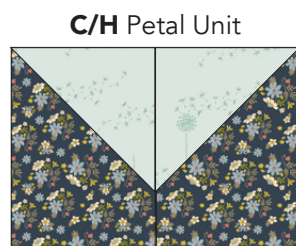
6. Repeat steps 1-5 to make following **A/I**, **A/J**, and **C/H** Petal Units:



Make 16



Make 20



Make 48

Petal Units should measure 4-1/2" x 3-1/2" unfinished.

7. **Block One:** Layout the following units in (7) rows as shown to make Block One. Sew into rows and join rows together. Block should measure 24-1/2" square unfinished. Make (5) Block Ones.

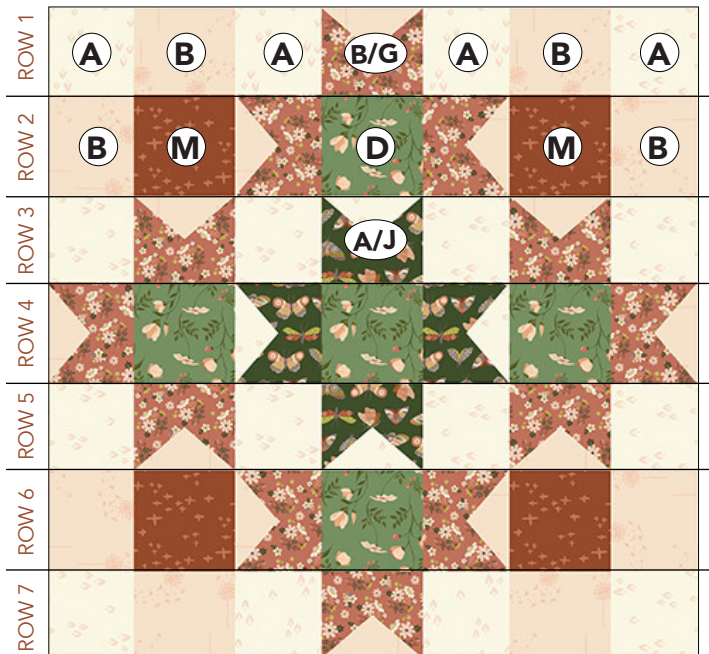
(12) **B/G** Petal Units | (4) **A/J** Petal Units | (16) **A** 3-1/2" squares

(8) **B** 3-1/2" x 4-1/2" rectangles | (5) **D** 4-1/2" squares | (4) Fabric **M** 4-1/2" squares

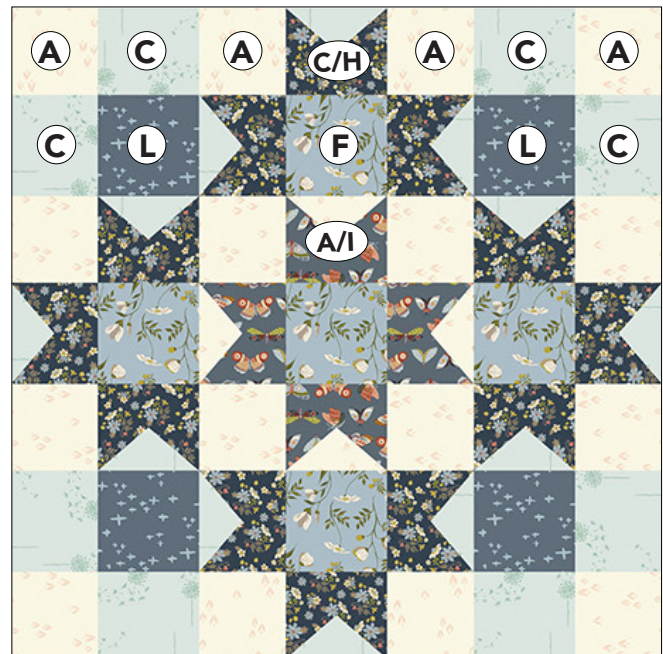
8. **Block Two:** Similar to Block One assembly layout (7) rows as shown to make Block Two. Sew into rows and join rows together. Block should measure 24-1/2" square unfinished. Make (4) Block Twos.

(12) **C/H** Petal Units | (4) **A/I** Petal Units | (16) **A** 3-1/2" squares

(8) **C** 3-1/2" x 4-1/2" rectangles | (5) **F** 4-1/2" squares | (4) Fabric **L** 4-1/2" squares



Make (5) Block Ones



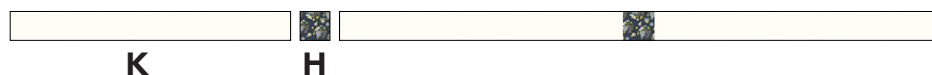
Make (4) Block Twos



# Canopy of Stars

## QUILT TOP ASSEMBLY

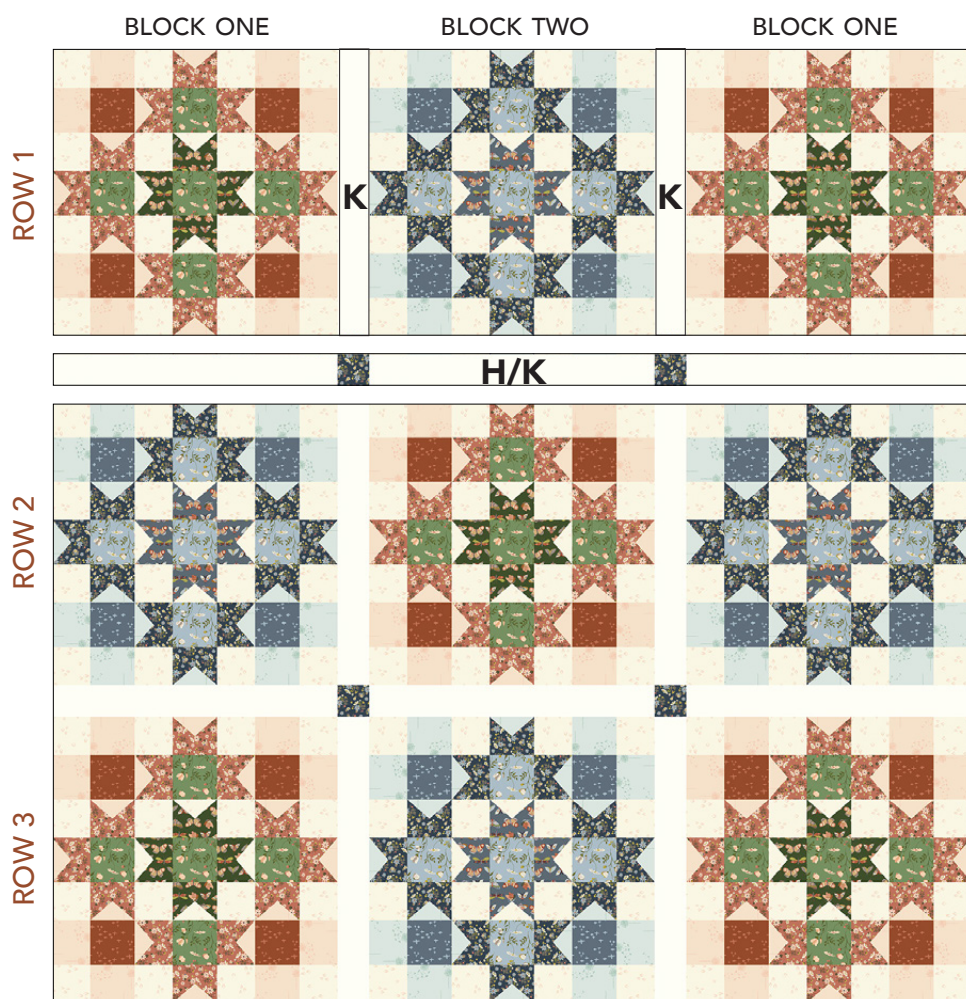
**9. H/K Sashing:** Take (3) **K** 2-1/2" x 24-1/2" sashing strips and (2) **H** 2-1/2" squares and sew together as shown. Make 2.



**10. Block Rows:** Sew together (3) Blocks and (2) **K** 2-1/2" x 24-1/2" sashing strips as shown in quilt diagram. *Note proper placement of blocks.* Make 3 rows.

**11.** Sew (1) **H/K** sashing strip to bottom of Block Rows 1 and 2.

**12.** Sew rows together, pressing toward the sashing rows to complete quilt top center. Quilt top center should measure 76-1/2" square unfinished.







# Canopy of Stars

## BORDER ASSEMBLY

**13.** Sew (1) **K** 2-1/2" x 76-1/2" strip to either side of the quilt top. Followed by (1) **K** 2-1/2" x 80-1/2" strip to top and bottom of quilt top. Press outward.

**14.** Sew (1) **E** 4-1/2" x 80-1/2" strip to either side of the quilt top. Followed by (1) **E** 4-1/2" x 88-1/2" strip to top and bottom of quilt top. Quilt top should measure 88-1/2" square unfinished.

**FINISHING:** Layer quilt top, batting and backing together to form quilt sandwich. Baste and quilt as desired. Bind using **H** 2-1/4" strips.

## QUILT DIAGRAM

